

WEST WIND



SPLIT ENTRY

DIMENSIONS: 28' X 44'

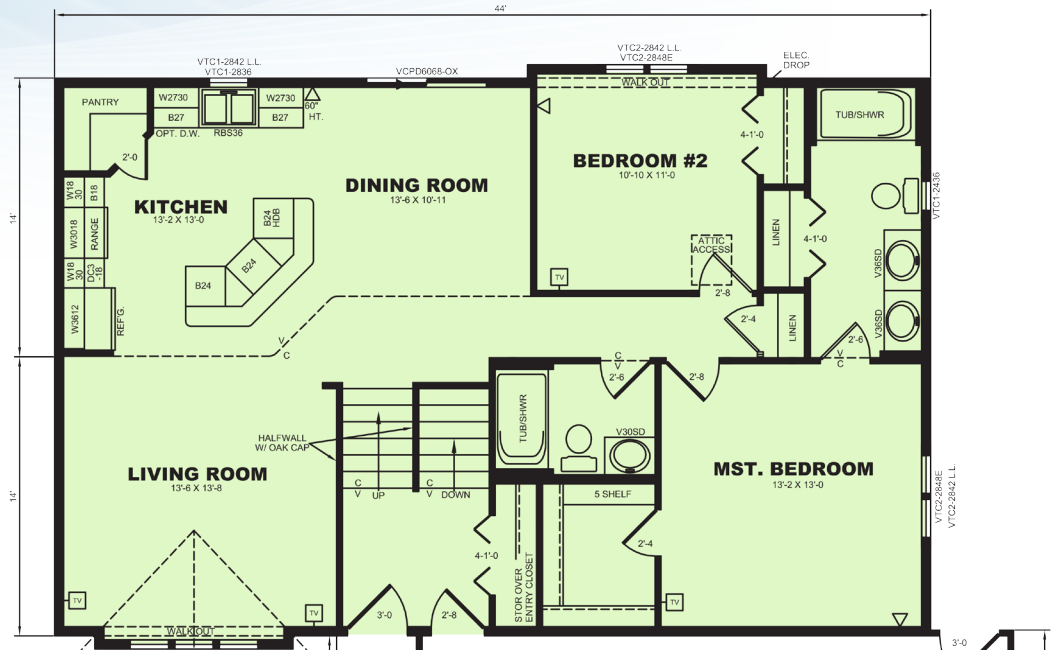
SQUARE FOOTAGE: 1,232 (UPPER ONLY)

SQUARE FOOTAGE: 2,332 (W/LOWER LEVEL)

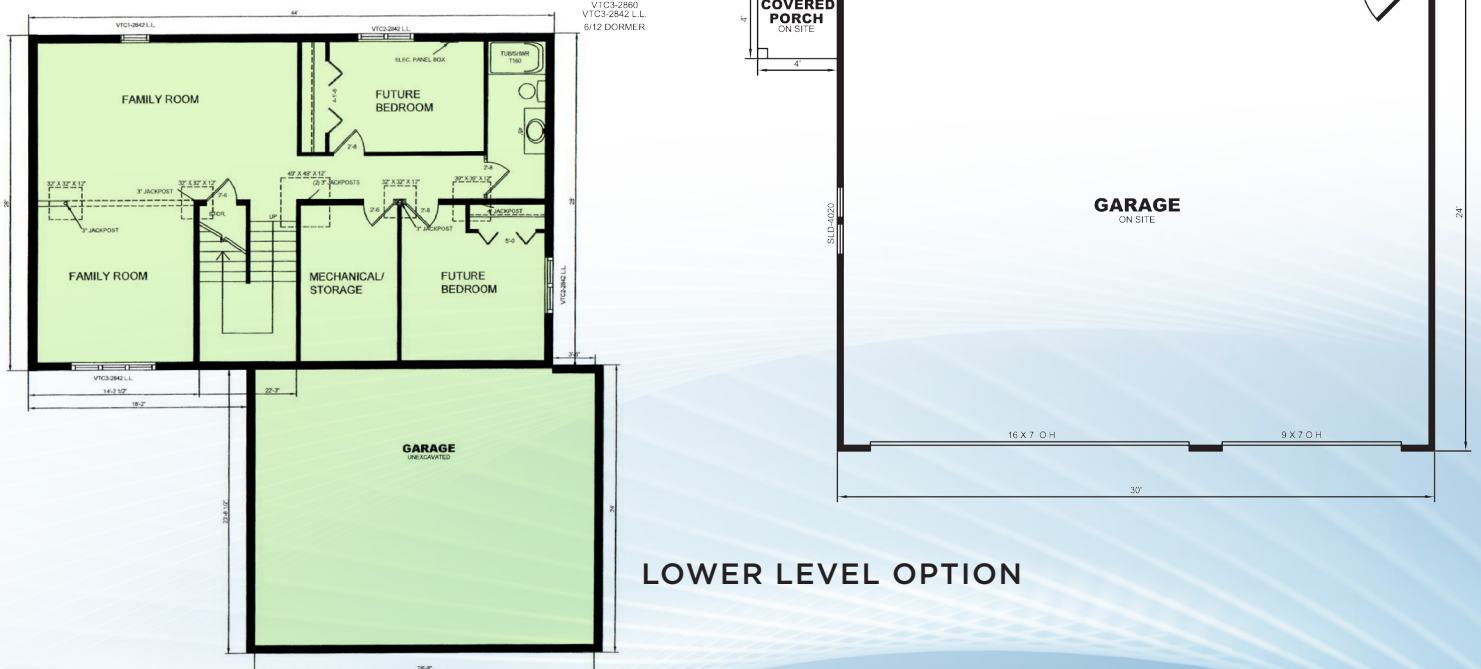
BEDROOMS: 2/4

BATH: 2/3

MAIN FLOOR



LOWER LEVEL OPTION



600 4th Street Suite 815 | Sioux City, IA 51101
 Showroom | 801 G. Street | South Sioux City, NE 68776 | 402.412.2462